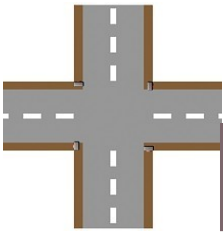


APRIL 2025



PHILADELPHIA PRESBYTERIAN CHURCH

351 Morrow Road, Forest Park, GA 30297 - PO Box 871028, Morrow, GA 30287

THE CROSSROADS

**He saw the linen
wrappings lying there,
and the cloth that had
been on Jesus head,
not lying with the linen
wrappings but
rolled up in
a place
by itself.**



John 20.6-7

PASTOR:

Rev. Jeanne Simpson

PHONE:

404-366-1851

PASTOR E-MAIL:

revjeannesimpson@gmail.com

SECRETARY E-MAIL:

secycppc@bellsouth.net

WEBSITE:

ppc-usa.org

**A light in the community
that brings all people to
God through Christ
centered worship and
ministry and nurtures their
faith in order to
extend His kingdom.**

Inside this issue:

| | |
|---------------------------|---|
| Prayer List / Thank You | 2 |
| Birthdays & Anniversaries | 2 |
| Babb Project | 2 |
| Craft Group | 3 |
| PW Corner | 3 |
| Securus House | 2 |
| Clerk's Corner | 3 |

THIS MONTH'S BIRTHDAYS

06/ Fred Rohrbach Jr.
08/ Erin Randolph
13/ Tom Smith
14/ Mallory Banke
15/ Jeanne Simpson
17/ Kathie Pierce
23/ Serena Staats
24/ John Randolph

THIS MONTH'S ANNIVERSARIES

15/ Jennifer & Fred Rohrbach
21/ Mallory & Chris Banke
24/ Glenda & Rusty Taylor

THIS MONTH'S USHERS

Jim Phillips
Tom Murphy
Cathy Morris

TO BE REMEMBERED IN PRAYER AND WITH CARDS (new info in bold)

Please notify us concerning new info and updates. Inquiring minds – and prayerful hearts – want to know!

03/23 Pam Langley—home from hospital but still having weakness
03/18 Cathy Morris - in Cardiac Care @ Piedmont Fayette with multiple issues
03/18 Danny Morris – recovering from COVID at home
03/18 Dot & Emory Pearce – still dealing with pain
03/23 Jim Phillips – physical therapy for pinched nerve in back
02/28 John Randolph –metastasized bladder cancer
03/11 Pam Rountree – surgery on 4/3, at Piedmont Atlanta to repair torn meniscus on right knee
03/23 Jim Simpson—in hospital for treatment for UTI
03/16 Arlene Wood (Frances' SIL) – radiation for lung cancer

OUR HOMEBOUND: Please refer to the Church Directory for contact information

Nell Cates Patty Boone Becky Huie Ann NeSmith

Please pray for the AA Participants meeting at our church

Prayer Request: Call 404-366-1851, Email secyppc@bellsouth.net or call a Session member or Shepherd.

*Dear Church family,
I have moved back to my
hometown, Cuthbert, GA. My
extended family here at Phila-
delphia will be greatly missed. I
will be praying for everyone.
Thanks for sharing the gospel
and love.*

*Much love and God bless,
Mary Smith*

*Dear Church family,
We have moved to Oaks at
Eagle's Landing. Please
pick up our change of ad-
dress on the bulletin board.
Thank you for all your
prayers.*

Dot & Emory Pearce

THANK YOU!

Because of your generosity dur-
ing our Souper Bowl campaign
in the month of February, we
were able to donate 279 food
items, at a value of \$927.58, to
Morrow Presbyterian Food Pan-
try along with a check for
\$200.00.

**Connie McWilliams
Community Missions**

The Babb Project— Community Outreach



With your generosity, we were able to spend \$407.30 for food in February to support this ministry. We are always in need of **food items** for the bags we give the students each week. See the list on our bulletin board. **Monetary Gifts** are also welcomed. Make your check payable to PPC and mark it for the Babb Project. For more info, see **Cathy Morris**.

SECURUS HOUSE CALL FOR EMERGENCY NEED:

Help us collect Bath Towels & Wash Cloths (new or slightly used) of **any color** for the women's shelter. Bring them in and leave in the narthex as you are able. We will take them to Securus House as we receive them until May 31. Thank You!



Tuesday, April 1, 9:30am @ Egg's Up,
Morrow. See you there!

PW MESSAGE CORNER:

APR 12—10:30am—Circle One

APR 9—07:00pm—Mary & Martha

Circle— virtual

Busy Bees Circle—TBA



PW Retreat!!!

Calling all ladies – we are having a PW Retreat on May 17, 2025. Our retreat will take place at our Church in the Fellowship Hall. We will start serving breakfast around 8:15 a.m. and then Reverend Jeanne will start our session at 9:00 a.m. Our retreat will focus on “Amazing Grace”. For lunch, we’re asking that everyone bring either a salad or sandwiches to share with others. There will be a sign-up sheet in the Narthex, so please sign-up for the retreat and indicate whether you are bringing a salad or sandwiches. The only “cost” for the retreat is either a smile or a hug to be given to anyone at the retreat. We hope that you will make plans to join us on May 17th.

BECAUSE YOU ASKED FOR IT...

During the November luncheon, I brought a Corn Casserole and several people asked for the recipe. My apologies for not providing sooner.

Jennifer Rohrbach

Corn Casserole:

- 1 can of Cream Corn
- 1 can of whole corn (do not drain)
- 2 eggs - stiffly beaten- before it turns white
- 1 box of Jiffy cornmeal
- 1 stick of melted butter
- 1 cup of sour cream

Directions:

Mix all of the ingredients together. Put in a 9x13 pan and bake at 350 degrees for 35 to 40 minutes. Shouldn't jiggle too much, check with a knife. If you double the recipe, cook for about 50 minutes.

PPC Clerk's Corner...

Greetings from the Clerk of Session,

Happy Easter to you all!!! What a wonderful time of year for all of us. Flowers are blooming and the trees are putting out new leaves but unfortunately there is the pollen to contend with. I owe you an apology for not placing information in the previous months Crossroads, but I will do my best to not forget again.

The Session has met every month so far and our most recent meeting was held on Tuesday, March 18, 2025. We are still meeting via Zoom. For the month of February, our financial information was as follows:

Total Assets - \$111,619.55

Monthly Identified Offerings – \$10,973.74

YTD Identified Offerings – \$19,674.74

Monthly Total Expenses – \$13,411.95

YTD Expenses – \$23,865.29

Monthly Surplus/Deficit – (\$2,438.21) – deficit

YTD Surplus/Deficit – (\$4,190.55) - deficit

As you can our expenses have been more than our Identified Offerings. We greatly appreciate your financial support, and we are always looking for ways to trim our expenses.

We are now 6 months away from Homecoming!!! Can you believe it? The Homecoming Committee is busy, but your help is needed as well. If you know of former members that have moved, please make sure that we have their correct address. We are planning to send out **Save the Date cards** this month and we want to make sure that we can send to as many former members as possible. If you have any addresses for previous members, please get this information to either Rick Pierce or myself so that we can update our mailing list. There is much work being done on the property, and we are holding 2 workdays a month in order to get done all that needs to be done before Homecoming. If you are able, please come out on the workdays and help with whatever projects are being done. Speaking of projects – we are in need of your help with a big one. We would love to update the flooring in the hallway, Sunday school rooms that are currently used, and the Sunday School office. We will soon reach out to various companies in order to get quotes for the work needed. We would like to start a “Flooring Fund” so that we have the funds to pay for the flooring without possibly pulling money from any of our other resources. **Please consider making an additional donation towards this project.**

Please know that you are loved and appreciated!!! Happy Easter to each of you!!!

Much love, Jennifer

Craft Group

April 8—11:30am @City Cafe, Fayetteville
April 22—11:30am—Green Ginger Rest.,
200 Market Place, Peachtree City

WORKDAY— 9:00AM—SAT, Apr 5 & 19



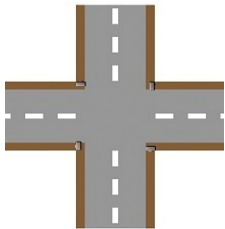
Please know that help is needed to get things ready for Homecoming. We hope you will come and help as you can over the course of the next year.

OUR MISSION: is to offer spiritual peace in a chaotic world through the stability of traditional Christ-centered teaching, worship and prayer.

OUR CORE VALUES:

- Radical Hospitality** (Romans 12:9-21)
- Passionate Worship** (John 4:21-24)
- Intentional Faith Development** (I Corinthians 9:19-24)
- Risk-Taking Mission and Service** (Matthew 25:14-30)
- Extravagant Generosity** (II Corinthians 9:6-15)

Find us on the web
ppc-usa.org



*THE CROSSROADS
PHILADELPHIA PRESBYTERIAN CHURCH
P.O. Box 871028
Morrow GA 30287*